

Weave Design Course

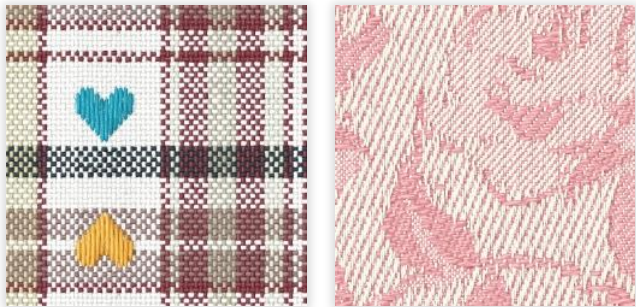
This course is to learn woven related design operations.
To take the course, you need to have an APEXFiz® Design-Weave or Design-Pro subscription or SDS®-ONE APEX4.

◆◆ What you can learn in the course ◆◆

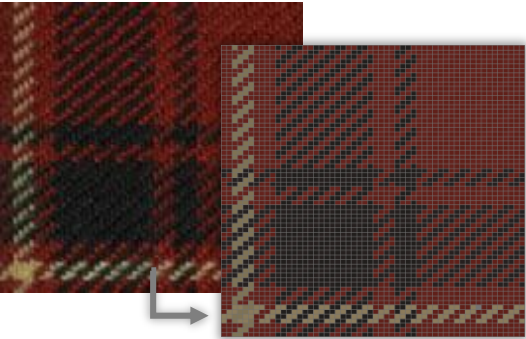
Basic Operations:
Basic operations for using the software



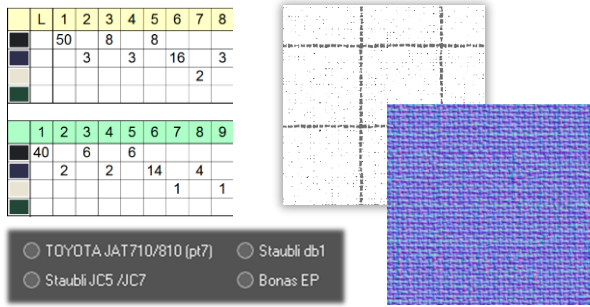
Woven Fabric Design:
Creation of fabrics with check, dobby, and jacquard patterns
Creation of multi-layered fabrics (double face/interchanging) and fabrics with empty dents is also introduced.



Fabric/structure Analysis:
Conversion of scanned fabric and structure image into data.



Various Data Output:
Output of stripe table and production data for factories
and texture maps for 3D software
Import of production data is also introduced



Yarn Registration:
Registration/creation of yarns for fabric design



Colorway Creation:
Creation of colorways based on scanned fabrics and product photos



Mapping:
Composite of woven fabrics and accessories to product photos



Embroidery/Accessory Creation:
Creation of embroidery and accessories for mapping

